



BLUECHIP

Timber Cladding

ULTRAWOOD

Product Brochure

www.bluechipgroup.net.au



ULTRAWOOD

Non-combustible Timber Cladding

Description

ULTRAWOOD is an innovative new generation exterior cladding product made from highly durable marine-grade aluminium and factory pre-finished using the latest matt-effect technology in 28 realistic timber colours. Deemed-to-satisfy non-combustible in accordance with the BCA/NCC, it has been fully tested in Australia by CSIRO achieving excellent results to AS 1530.1 and AS 1530.3. Eco-friendly, low maintenance and incredibly durable, ULTRAWOOD is ideal for type A and B construction projects such as high rise apartments and bushfire rated areas which require non-combustible cladding.

Product Benefits



AS 1530.1 NON-COMBUSTIBLE

ULTRAWOOD is a non-combustible cladding product in accordance with the relevant requirements of the NCC/BCA and has been tested by NATA accredited CSIRO to AS 1530.1 and AS 1530.3.



MARINE GRADE DURABILITY

Along with the marine-grade aluminium base material, the matt-effect ULTRAWOOD coating has undergone extensive durability testing and has been proven to perform in the harsh Australian conditions.



INTELLIGENT PROFILE

The ULTRAWOOD profile has been intelligently designed to provide excellent usability such as multi-angle mating and it has one single swarf-free contact point for superior consistency and weather-proofing.



EASY INSTALLATION

Supplied in custom lengths, ULTRAWOOD has 155mm cover per board making it fast and easy to install to a simple sub-frame at 600mm centres using secret-fix screws and a colour-matched trim system.



VERY LIGHT-WEIGHT

Compared to many other timber cladding products, ULTRAWOOD is a very light-weight system weighing only 8.75kg per square metre offering potential structural advantages and cost savings.



MANUFACTURER'S WARRANTY

Despite the undisputed durability of high-grade aluminium, ULTRAWOOD cladding offers a 10yr manufacturer's warranty on all different finishes for peace of mind and guaranteed performance.



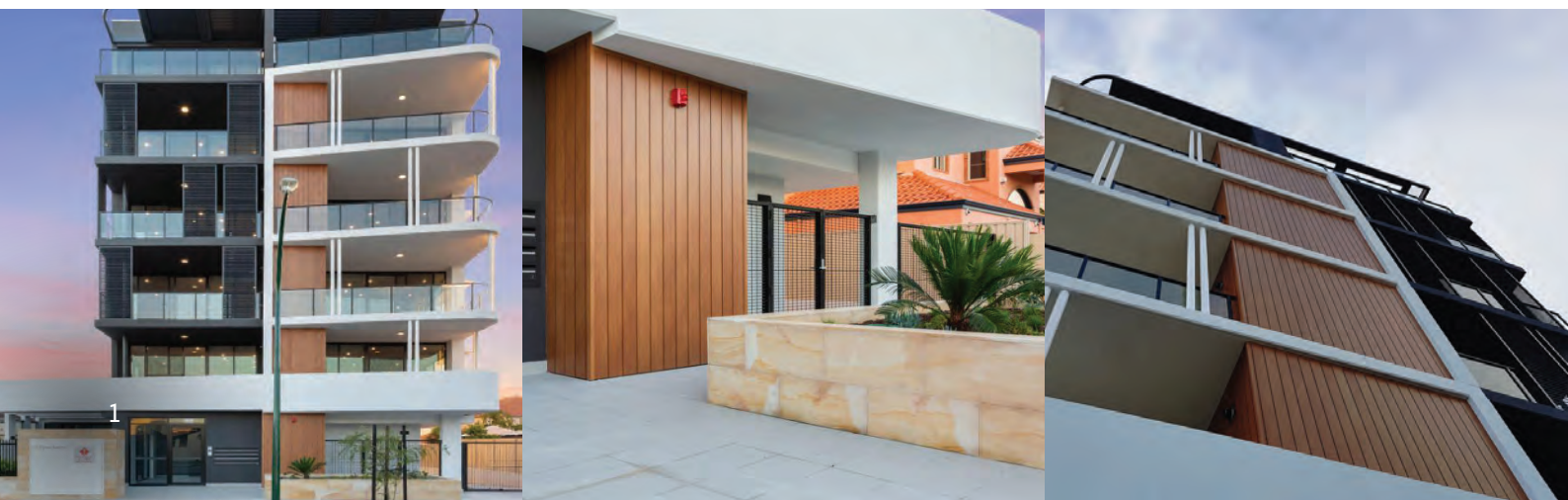
NATURAL AESTHETICS

The beautiful looking finish on the ULTRAWOOD boards is possible because the latest matt-effect coating technology provides incredible richness and variation along with outstanding long-term durability.









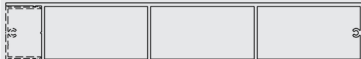


COLOUR-MATCHED TRIMS

The ULTRAWOOD system is completed using the CLADTRIM click-together trim system covering all common construction details and finished in exactly the same matt-effect coating for a perfect match.



Profiles

	Specification Code: UW*G ULTRAWOOD 155 x 18 Groove Cladding
	Specification Code: UW*C ULTRAWOOD 205 x 30 Cabin Cladding
	Specification Code: UW*S ULTRAWOOD 205 x 48 Seam Cladding
	Specification Code: UW*B5050 ULTRAWOOD 50 x 50 Batten
	Specification Code: UW*B10050 ULTRAWOOD 100 x 50 Batten
	Specification Code: UW*B15050 ULTRAWOOD 150 x 50 Batten
	Specification Code: UW*B20050 ULTRAWOOD 200 x 50 Batten
	Specification Code: UW*B25050 ULTRAWOOD 250 x 50 Batten
	Specification Code: UW*B30050 ULTRAWOOD 300 x 50 Batten

Availability

CODE	DESCRIPTION	LEAD TIME	MOQ
UW*G15518	ULTRAWOOD 155 x 18mm Groove (Insert Colour), 6.5m	2-3 Weeks	1 Length
UW*C20530	ULTRAWOOD 205 x 30mm Cabin (Insert Colour), 6.5m	8-10 Weeks	50 Lengths
UW*S20548	ULTRAWOOD 205 x 48mm Seam (Insert Colour), 6.5m	8-10 Weeks	50 Lengths
UW*BXXX50	ULTRAWOOD XXX x 50mm Batten (Insert Colour), 6.5m	2-3 Weeks	1 Length
UWEXXX50	ULTRAWOOD XXX x 50mm Batten End Cap (Insert Colour)	2-3 Weeks	1 End Cap

* Indicates different finish options. U for Ultrawood Timber Colours and P for Powdercoat Colours

System Components



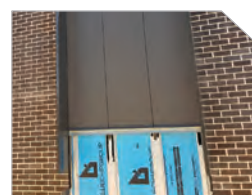
FIRESPAN
AS 1530.1 Sarking



STUDEK
Steel Sub-framing



CLADTRIM
Colour-match Trims



ADHESIVES
SikaTack & 11FC



COLOURFIX
Coloured Fixings

ULTRAWOOD

Colour Chart

Ultrawood Colours



UW0123
Alabama White



UW1902 Smoke
Bush



UW1560 White
Birch



UW0903 Ivory
Coast



UW0816 Hoop
Pine



UW0820 Cedar



UW1318 Mallee
Root



UW1570 Silver
Oak



UW0502
European Beech



UW1301
Manuka



UW1520 White
Oak



UW2015
Tasmanian Oak



UW1816 Rustic
Pine



UW0515 English
Oak



UW0813 Honey
Maple



UW1907 Banjo
Gum



UW0302
Coastal
Blackbutt



UW0220
Burmese Teak



UW0103
Alaskan Cedar



UW1703
Queensland
Cedar



UW1510
Meranti



UW2503 Yukon
Cedar



UW2203
Vancouver
Cedar



UW1410
Nannup Jarrah



UW1540 Dark
Cedar



UW2311
Woodstock



UW1403 Native
Cherry



UW0220
Burmese Teak



UW1809 Red
Ironbark



UW1102 Kwila
Bean



UW1813 Rich
Mahogany



UW1523 Old
Walnut



UW0223 Black
Wenge

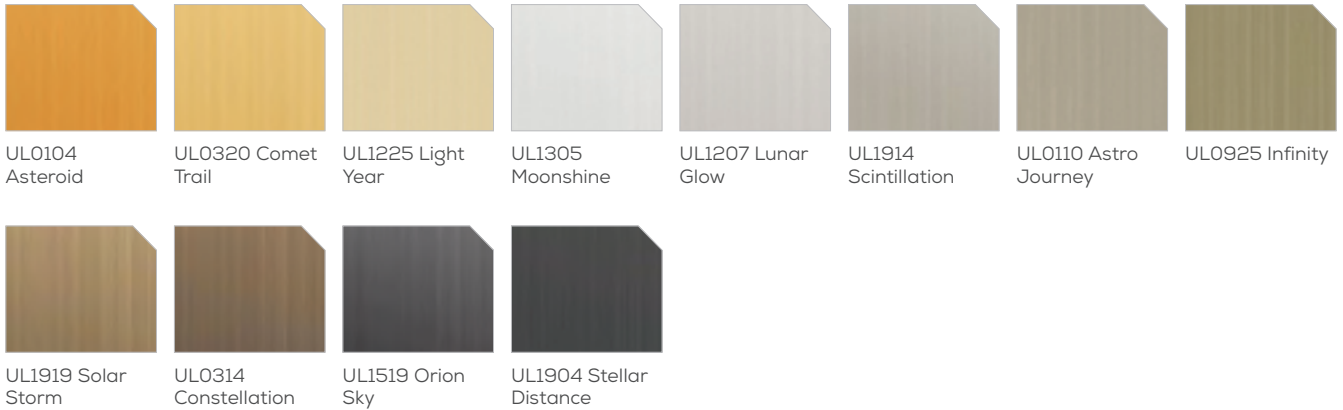


UW1580
African Ebony





Anodised Colours



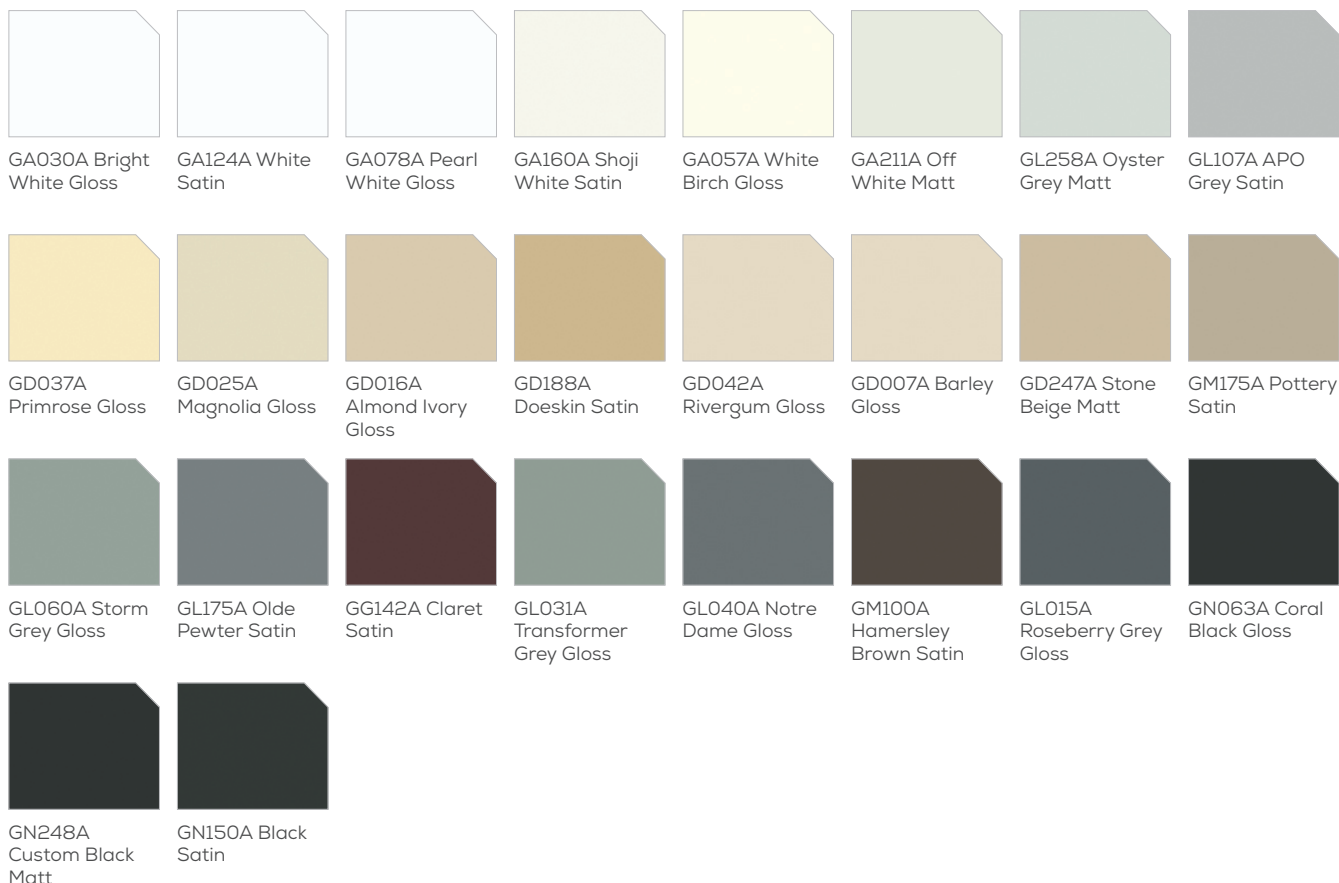
Powdercoat Excel Colours



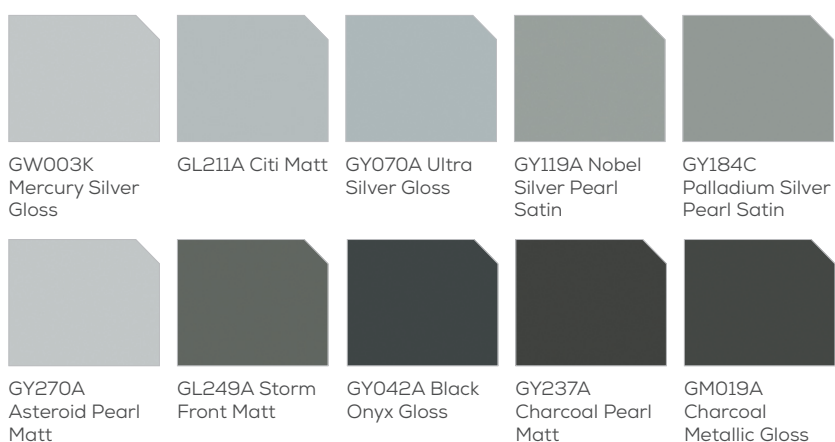
ULTRAWOOD

Colour Chart

Powdercoat Living Colours



Powdercoat Vivica Colours

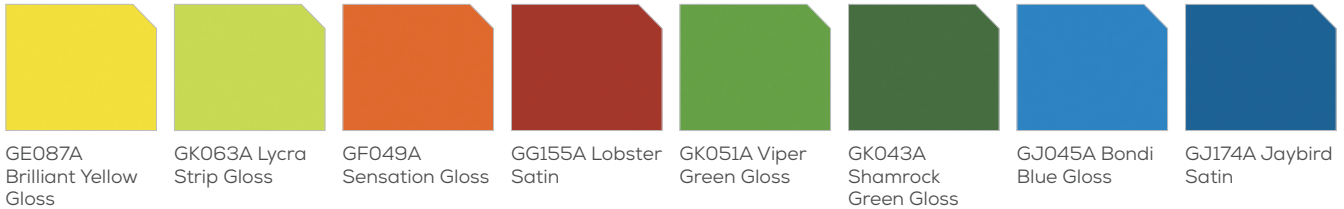


Precis Colours





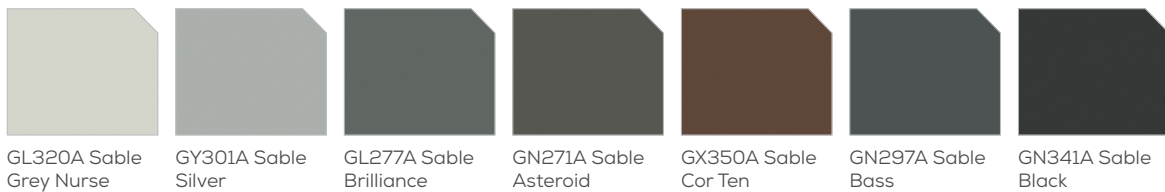
Powdercoat Vitality Colours



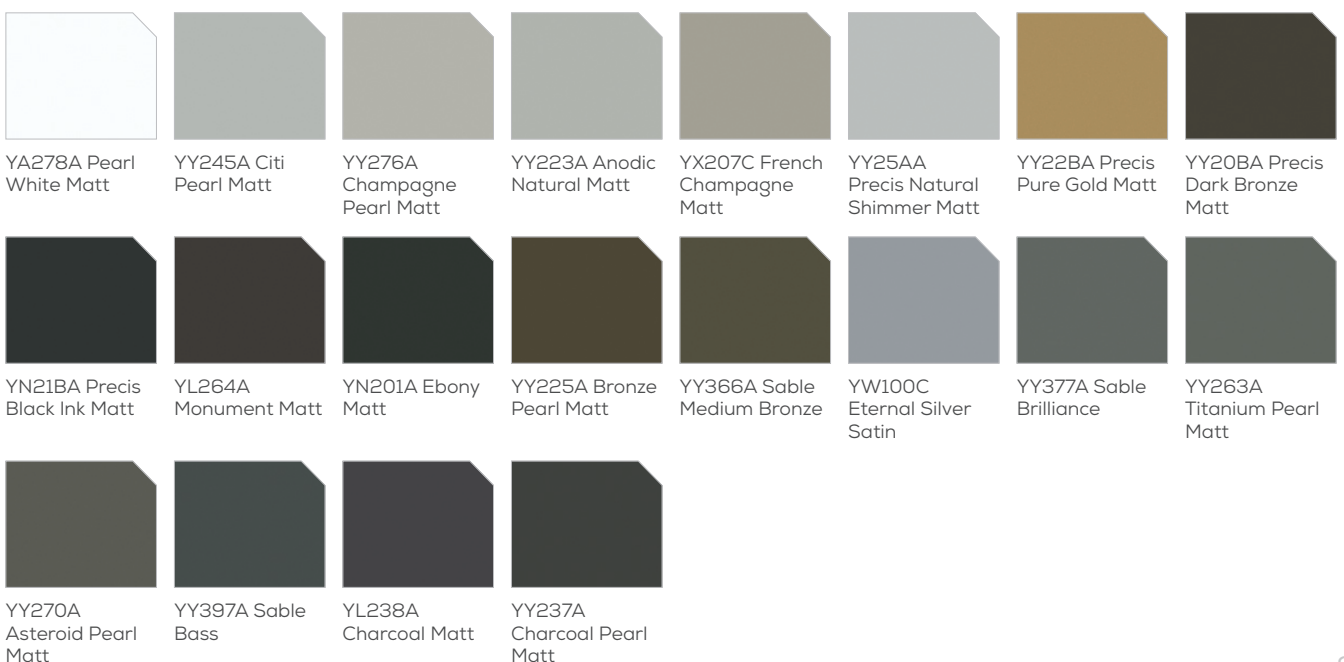
Powdercoat Anodic Colours



Powdercoat Sable Colours



Powdercoat Ultriva Colours





We've Got It Covered

V0919



Blue Chip Group Pty Ltd
16 Ashby Close, Forrestfield WA 6058
P (08) 9451 2344 F (08) 9451 8983
E sales@bluechipgroup.net.au

www.bluechipgroup.net.au

DISCLAIMER No information or advice contained in this publication is binding in any way shape or form and is provided on a without prejudice basis. All photographs and colour swatches are indicative only. All dimensions are nominal and all product data and specifications are subject to change without notice. All pricing, sales, communications and transactions are subject to Blue Chip Group's terms of trading which are available on request.